

Quality to a 'T'

# Turkington Smart Aluminium

Turkington's  
new **Smart**  
range of  
doors and  
windows

**Smart** Lift & Slide Doors

**Smart** Bi-Fold Doors

**Smart** Aluminium Windows

*designed by you*

**Turkington**  
Windows & Conservatories



designed by you  
Notes and Plans



# Make the **Smart** Choice

Our Smart aluminium doors are a dynamic choice that maximise light and give stunning unimpeded views. They open your home to the outdoors, bringing a bright, open and spacious atmosphere.

Create a relaxed feeling of light and space, but also frame the beautiful views of your garden and beyond.

Suitable for installation in any room, these elegant systems add a touch of finesse and provide a fantastic wall of moving glass.

Choose from our fantastic Lift & Slide or Bi-Fold options.

Strong

Weather resistant

Warm

Secure locking

Wide choice colours

Choice of configurations and hardware

U Value of 1.6 W/m<sup>2</sup>K (with a suitable sealed unit)

Structurally sound

Extremely low maintenance

Tailored to your precise requirements.

Elegant profile

High-security glazing

Thermally broken frame

Never fade, deteriorate or rust

Marine grade as standard

Can go wide and tall

Delivers outstanding performance over a lifetime

Aluminium is fully recyclable

No requirement for re-painting or re-varnishing

## Smart Lift & Slide Doors



## Smart Bi-Fold Doors



## Smart Aluminium Windows



## Smart's unique Sensations Range of textured finishes

An exclusive range of metallic finishes that combine with a unique tactile finish to bring style and durability to any building project. Ideal for both modern architecture and restoration projects, 'Sensations' provide a unique finish to windows and doors.

Velour White



Frost White



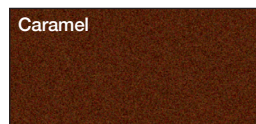
Dune



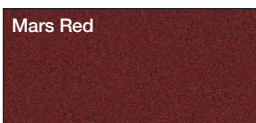
Sand



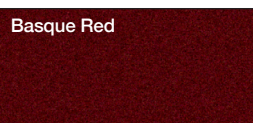
Caramel



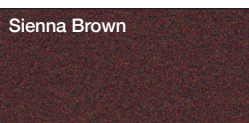
Mars Red



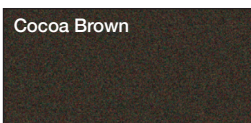
Basque Red



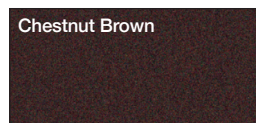
Sienna Brown



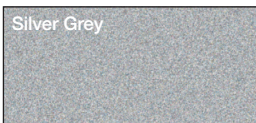
Cocoa Brown



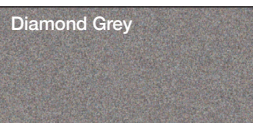
Chestnut Brown



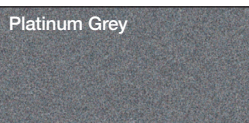
Silver Grey



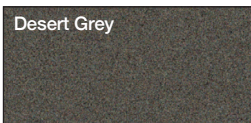
Diamond Grey



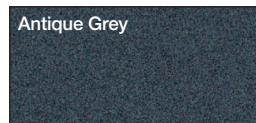
Platinum Grey



Desert Grey



Antique Grey

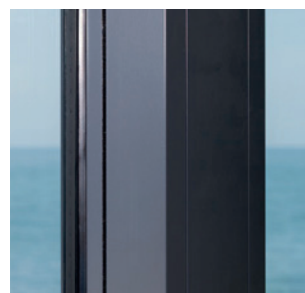


# Should I choose a **Smart** Lift & Slide Door or a **Smart** Bi-Fold Door

Offering the opportunity to open up your living space and bring the outdoors inside, Smart Lift & Slide and Bi-Fold Doors provide a great many benefits to virtually any property. But which system will be the best for you?



**Frame Head**



**Meeting Style**

Choice of standard or slim line meeting style available.



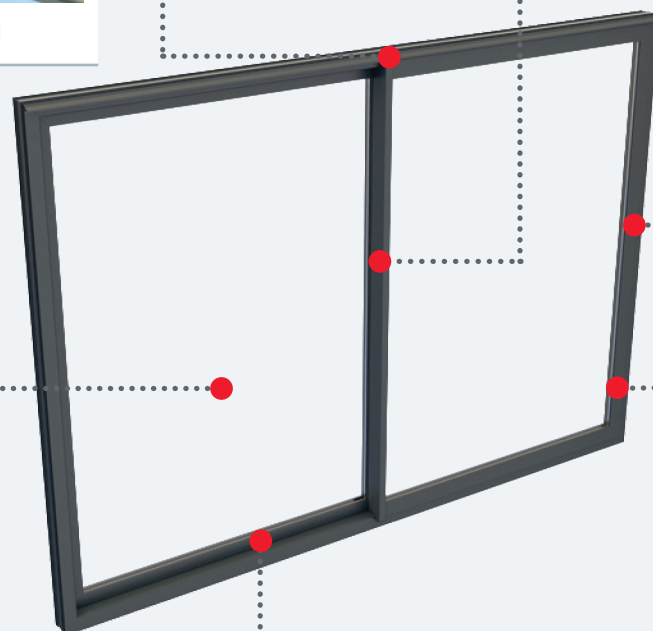
**Handle**

Smart has a range of attractive handles for you to choose from.

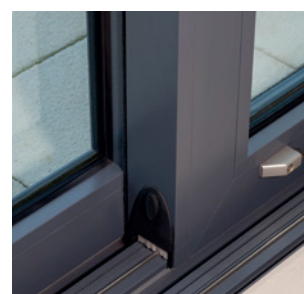


**Large Glass Area**

Sliding doors offer a large glass area. Perfect for maximising light and framing stunning views.



**Frame Jamb**



**Threshold**

Where the situation allows, the threshold can be recessed into the floor level.

## Lift & Slide Doors

- Large panes move to the side, stacked one behind the other.
- Double and triple track options for two, three and four sash systems.
- Maximise light and give the most unobstructed views when closed.
- Slim lines and discrete hardware.
- Ideal solution where space is limited.

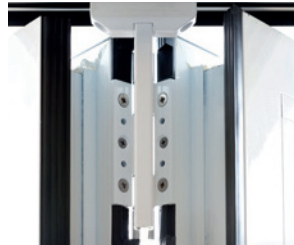


## Bi-Fold Doors

- Slim lines combine elegance with great performance together with smooth, easy and reliable operation.
- Multiple door leaves concertina to the side.
- Can incorporate a 'traditional door' for flexible use.
- Completely uninterrupted views when open.
- Great solution for small spaces.



**Sash & Jamb Hinge**



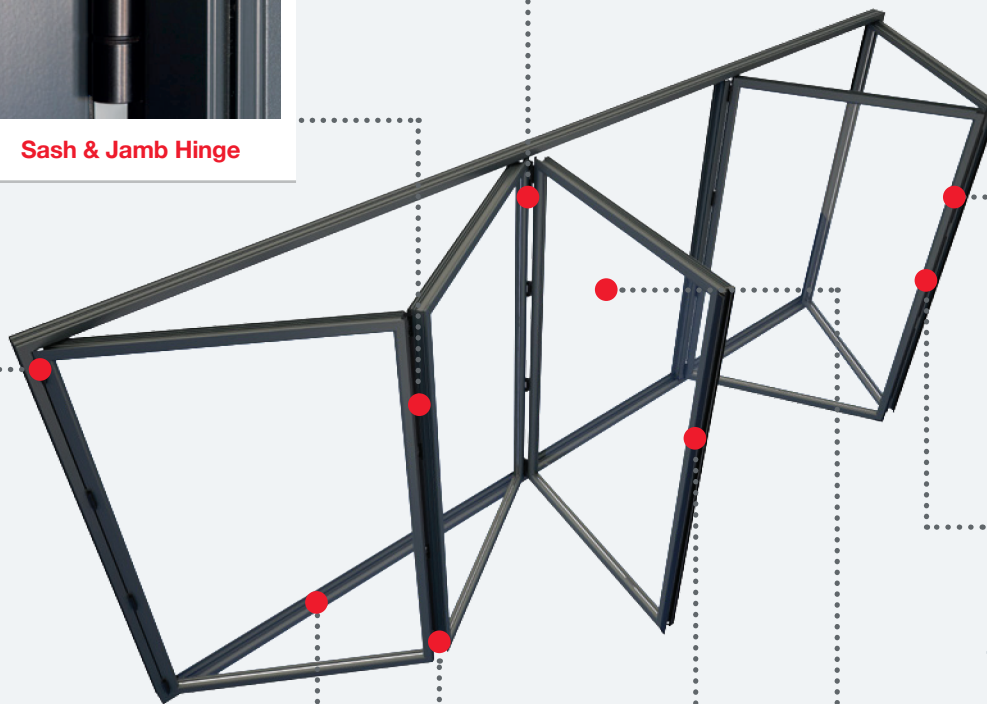
### Top & Bottom Roller

Smart's sash rollers are designed and engineered to the highest standards to ensure quality and reliability. Our rollers are marked with the Smart 'Spark', so you can be sure they meet these exacting standards.



### 'D' Handle

Used to pull sashes from a folded open position to a closed position.



### Flat Sash Handle

Used to operate the locking shoot-bolts on the sashes.



### Threshold

A choice of rebated or low level thresholds is available. Where the situation allows, thresholds can also be recessed into the floor level.



### Bottom Roller



### Main Operating Handle

We have a range of lever handle styles available, including high security PAS 24 options.



### Opening

Slide folding doors open to reveal a nearly 100% opening aperture, bringing 'the outside in' and creating amazing living spaces.









# Turkington's new aluminium **Smart** Bi-Fold Doors

Available in a range of opening configurations to suit any application, our **Smart Bi-Fold Doors** can be folded internally or externally and with the opening at the side (so the sashes all fold one way), at one end (to create a single entrance door) or in the middle (to give the option of a double door).

The Smart Bi-fold's flexibility makes it the ideal choice for projects where large, uninterrupted openings are required, providing maximum light and space to give unimpeded views. The highly-versatile, easy-to-operate system is the perfect option for even the largest project, capable of opening up an entire wall, yet presenting a contemporary, elegant glazed façade when closed.

Our profile features a thermal break to deliver enhanced thermal performance and energy efficiency and security is assured by multi-point lock mechanisms on the main opening sashes, and shoot-bolt locks on the 'floating' mullions.

The doors can have either a low threshold for unimpeded access, or a rebated threshold for improved weather resistance.

Our doors are available in a broad choice of colours including metallic, wood-structure, dual colour and Smart's unique Sensations range of textured finishes.

Attractive slim-line profiles offers reduced sightlines

Mitred corners

Lift-up handles and one piece keep

Broad range of single or dual colours.

Marine quality polyester coated as standard

U-Value 1.5 W/m<sup>2</sup>K with suitable glazing unit 1.0

Air: Class 4, 600 Pa

Water: Class E, 750 Pa

Wind Class 4, 1800 Pa

Document L compliant

Enhanced security performance: PAS 24: 2016

Frame width: 102.5mm

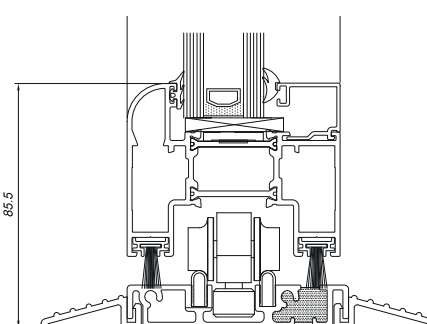
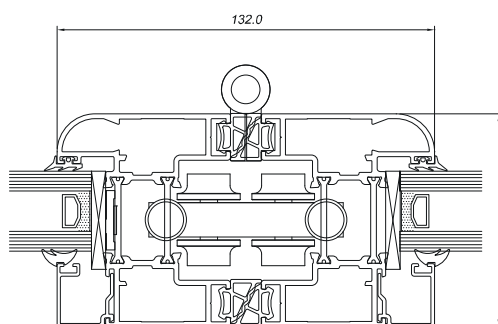
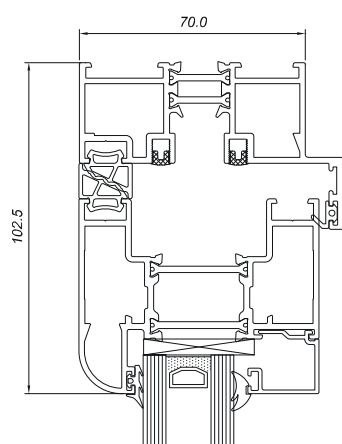
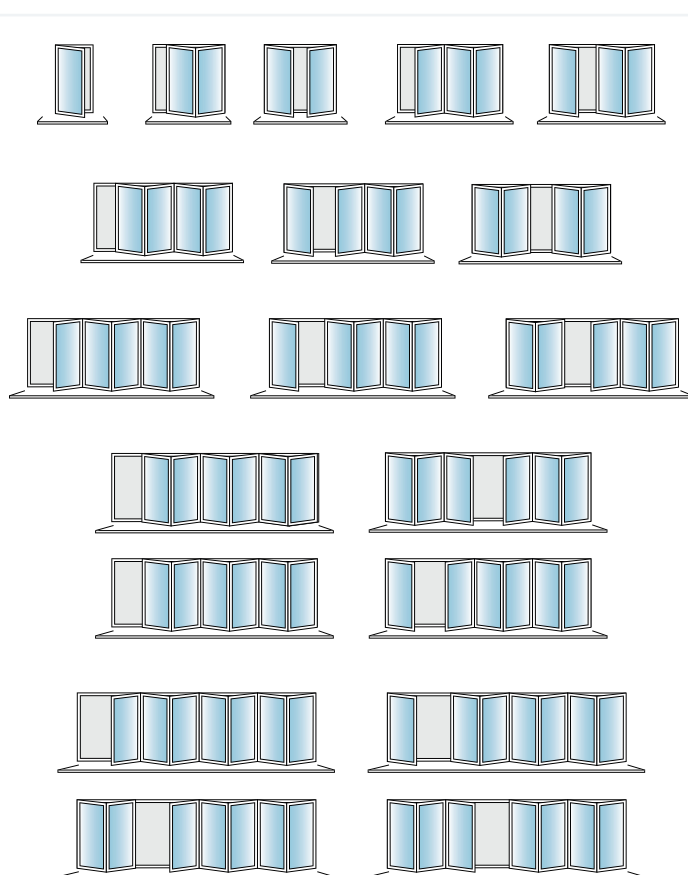
Frame depth: 70mm

Glass: Double or Triple glazed

Max o/a height: 2500mm

Max o/a width: 1200mm per sash

Max sash weight: 100kg









# Turkington's new **Smart** Aluminium Windows

This versatile range of profiles can provide many solutions for residential and light commercial applications. It can create traditional casement windows inspired by the elegance and styling of timber products, or contemporary style windows designed for modern homes.

The **Smart** Aluminium Window incorporates polyamide thermal break technology which creates a barrier between the cold air outside and the warm air inside. This technology significantly reduces thermal transmittance and enhances the overall U Value of a product and is designed to meet the exacting requirements of Document L 2010.

Typical U Value 1.6 W/m<sup>2</sup>K  
(using 1.0 W/m<sup>2</sup>K centre pane)

Air 600Pa

Water 1200Pa

Wind 2400Pa

Side Hung Max Width 1000mm

Side Hung Max Height 1400mm

Top Hung Max Width 1400mm

Top Hung Max Height 1500mm

Designed to comply with the revisions  
to the Building Regulations Document L 2010

British Standard Kitemark KM81580

British Standard Kitemark KM81543

PAS 24:2016

BS 4873:2016

BS 6375-1:2009

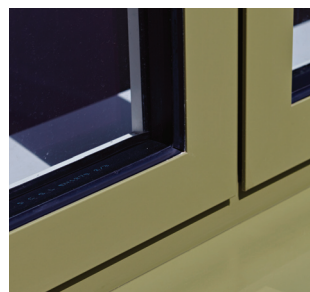
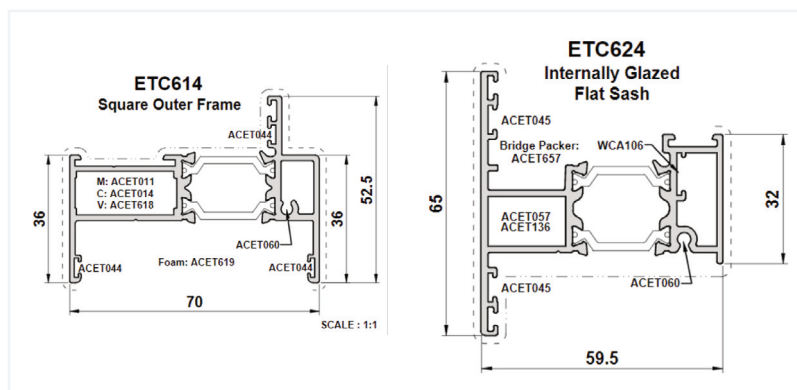
BS 7950:1997

Broad range of single or dual colours

Marine quality polyester coated as standard

Glazing: Double or Triple

Frame depth 59mm or 70mm









Freephone **0800 028 1812**  
 Head Office & Portadown Showroom **+44 (0)28 3839 3030**  
 Lisburn Showroom **+44 (0)28 9266 8883**  
**info@turkington-windows.com**  
**www.turkington-windows.com**

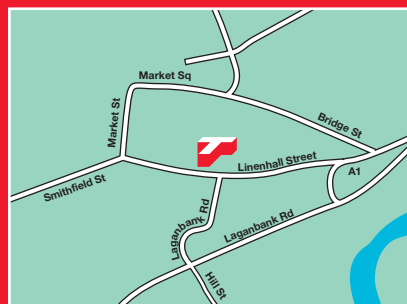


*The enclosed photographs and diagrams are for illustrative purposes only. Product specifications are subject to change.*

Visit us at our Portadown and Lisburn Showrooms



**Portadown Showroom**  
 James Park, Mahon Road,  
 Portadown, Co. Armagh,  
 BT62 3EH  
 Tel: **028 3839 3030**



**Lisburn Showroom**  
 17 Linenhall Street,  
 Lisburn, Co. Down,  
 BT28 1FJ  
 Tel: **028 9266 8883**

