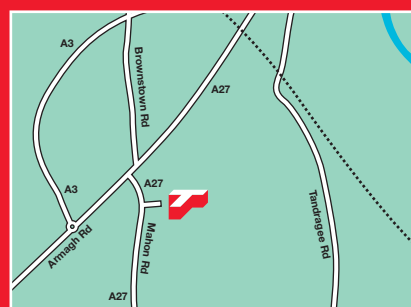


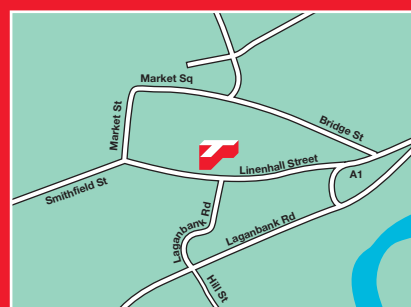
Freephone **0800 028 1812**
 Head Office & Portadown Showroom **+44 (0)28 3839 3030**
 Lisburn Showroom **+44 (0)28 9266 8883**
info@turkington-windows.com
www.turkington-windows.com



Visit us at our Portadown and Lisburn Showrooms



Portadown Showroom
 James Park, Mahon Road,
 Portadown, Co. Armagh,
 BT62 3EH
 Tel: **028 3839 3030**



Lisburn Showroom
 17 Linenhall Street,
 Lisburn, Co. Down,
 BT28 1FJ
 Tel: **028 9266 8883**

Quality to a 'T'

Turkington Smart Aluminium

Turkington's
new **Smart**
range of
doors and
windows

Smart Lift & Slide Doors
Smart Bi-Fold Doors
Smart Aluminium Windows
 designed by you



Turkington
 Windows & Conservatories



designed by you

Notes and Plans

Make the Smart Choice

Our Smart aluminium doors are a dynamic choice that maximise light and give stunning unimpeded views. They open your home to the outdoors, bringing a bright, open and spacious atmosphere.

Create a relaxed feeling of light and space, but also frame the beautiful views of your garden and beyond. Suitable for installation in any room, these elegant systems add a touch of finesse and provide a fantastic wall of moving glass. Choose from our fantastic Lift & Slide or Bi-Fold options.

- Strong
- Weather resistant
- Warm
- Secure locking
- Wide choice colours
- Choice of configurations and hardware
- U Value of 1.6 W/m²K (with a suitable sealed unit)
- Structurally sound
- Extremely low maintenance
- Tailored to your precise requirements.
- Elegant profile
- High-security glazing
- Thermally broken frame
- Never fade, deteriorate or rust
- Marine grade as standard
- Can go wide and tall
- Delivers outstanding performance over a lifetime
- Aluminium is fully recyclable
- No requirement for re-painting or re-varnishing

Smart Lift & Slide Doors



Smart Bi-Fold Doors



Smart Aluminium Windows



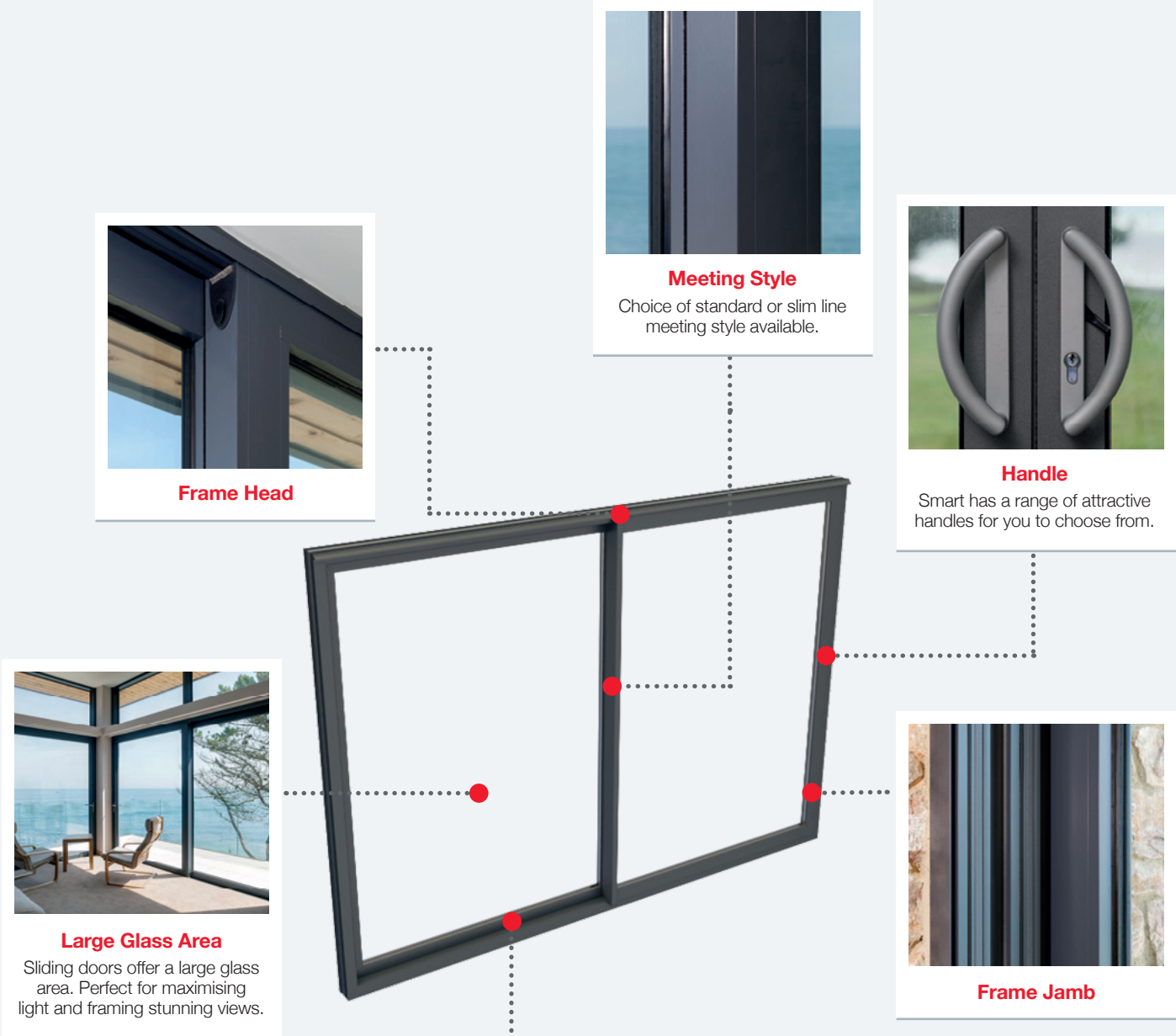
Smart's unique Sensations Range of textured finishes

An exclusive range of metallic finishes that combine with a unique tactile finish to bring style and durability to any building project. Ideal for both modern architecture and restoration projects, 'Sensations' provide a unique finish to windows and doors.

Velour White	Frost White	Dune	Sand	Caramel
Mars Red	Basque Red	Sienna Brown	Cocoa Brown	Chestnut Brown
Silver Grey	Diamond Grey	Platinum Grey	Desert Grey	Antique Grey

Should I choose a Smart Lift & Slide Door or a Smart Bi-Fold Door

Offering the opportunity to open up your living space and bring the outdoors inside, Smart Lift & Slide and Bi-Fold Doors provide a great many benefits to virtually any property. But which system will be the best for you?

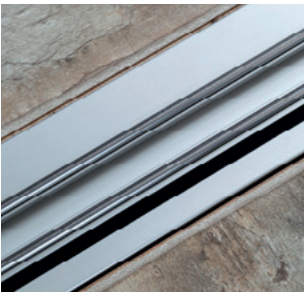
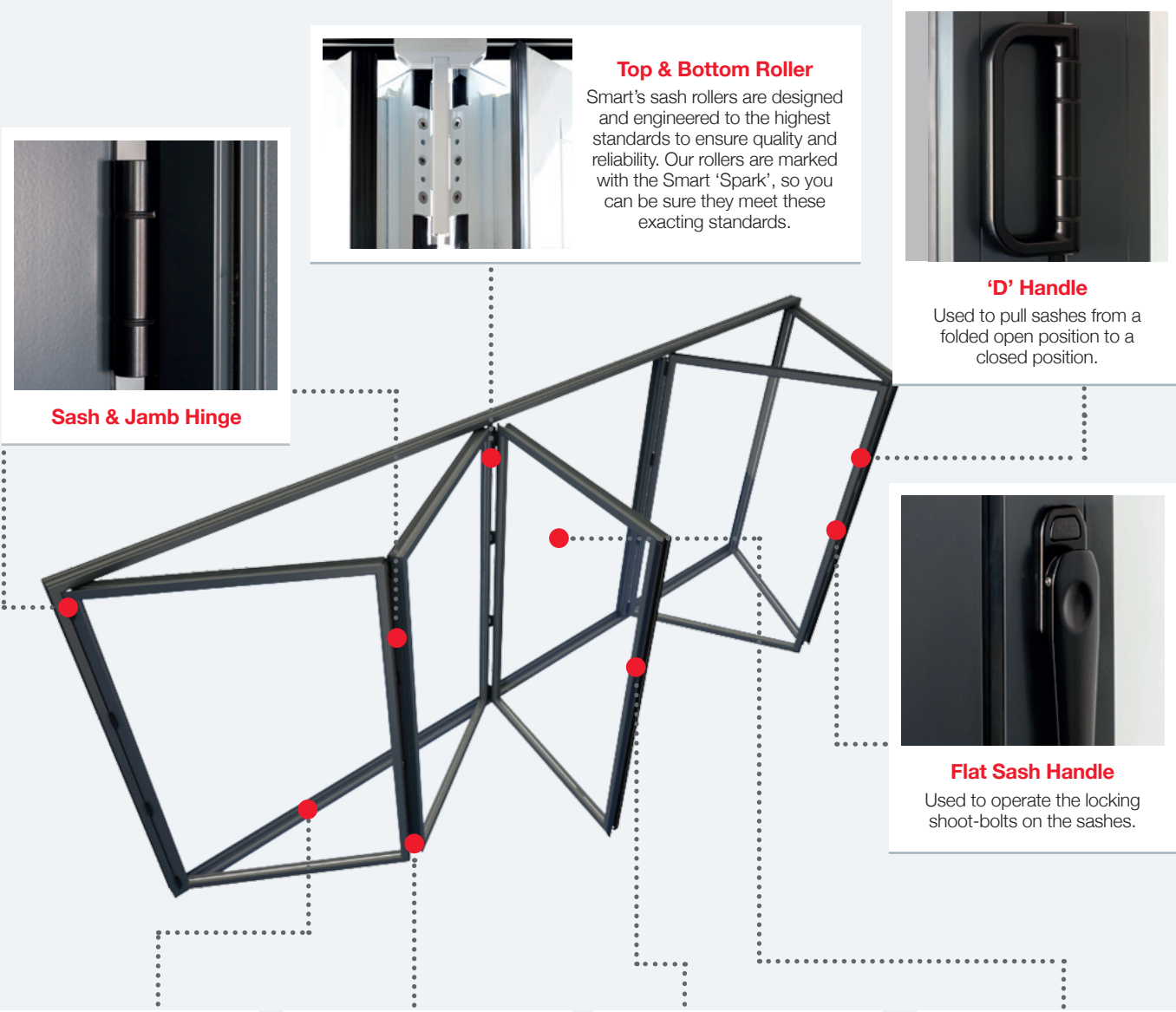


Lift & Slide Doors

- Large panes move to the side, stacked one behind the other.
- Double and triple track options for two, three and four sash systems.
- Maximise light and give the most unobstructed views when closed.
- Slim lines and discrete hardware.
- Ideal solution where space is limited.

Bi-Fold Doors

- Slim lines combine elegance with great performance together with smooth, easy and reliable operation.
- Multiple door leaves concertina to the side.
- Can incorporate a 'traditional door' for flexible use.
- Completely uninterrupted views when open.
- Great solution for small spaces.



Threshold

A choice of rebated or low level thresholds is available. Where the situation allows, thresholds can also be recessed into the floor level.



Bottom Roller



Main Operating Handle

We have a range of lever handle styles available, including high security PAS 24 options.



Opening

Slide folding doors open to reveal a nearly 100% opening aperture, bringing 'the outside in' and creating amazing living spaces.

Turkington's new aluminium **Smart** Lift & Slide Doors

Our **Smart Lift and Slide Doors** provide the maximum light and afford the most unobstructed views of any system when closed and with our wide range of systems and options, you can select and tailor a door system to exactly meet your own specific requirements.

With a choice of frame sizes, sliding formats and two, three and four pane systems, together with a choice of high quality hardware and a wide range of colour options, the lines of these elegant doors make them the perfect solution for any home.

The Smart Lift & Slide is a dynamic residential sliding doors that maximise light and give stunning unimpeded views. They offer contemporary styling whilst delivering superior thermal performance in a robust system.

The profile has been designed to improve both strength and weather resistance. All main sections feature an extended polyamide thermal break that achieves a U Value of 1.6 W/m²K and are available in a broad range of both single and dual colours.



U Value 1.6 W/m²K

Air Class 3, 600Pa

Water Class 7a, 300Pa

Wind Class AE, 2400Pa

Frame Width 53mm

Glass 38mm double or triple glazed sealed units

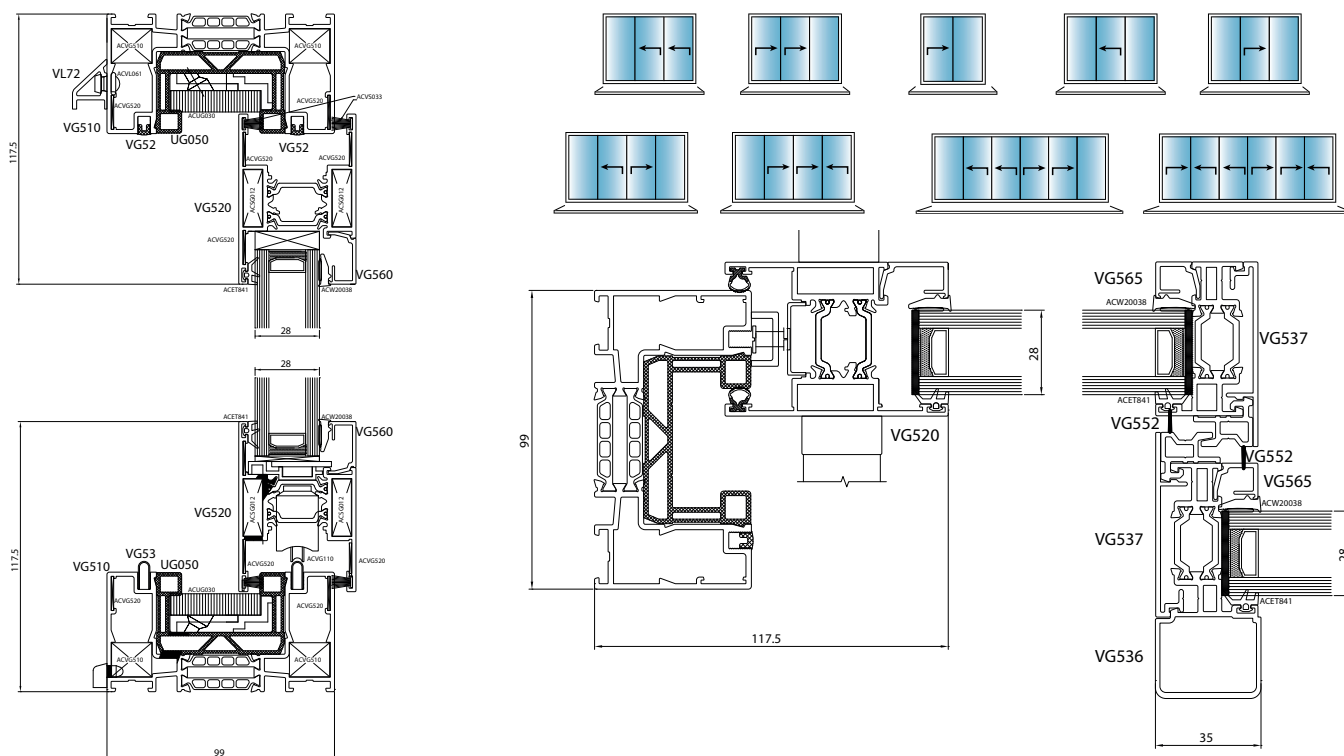
Design Limitations

Max Sash Weight: 250kg

Max Sash Height: 2500mm

Max Sash Width: Within above limitations

Kitemarked system achieving KM 530838 PAS 24:2012



Turkington's new aluminium **Smart** Bi-Fold Doors

Available in a range of opening configurations to suit any application, our **Smart Bi-Fold Doors** can be folded internally or externally and with the opening at the side (so the sashes all fold one way), at one end (to create a single entrance door) or in the middle (to give the option of a double door).

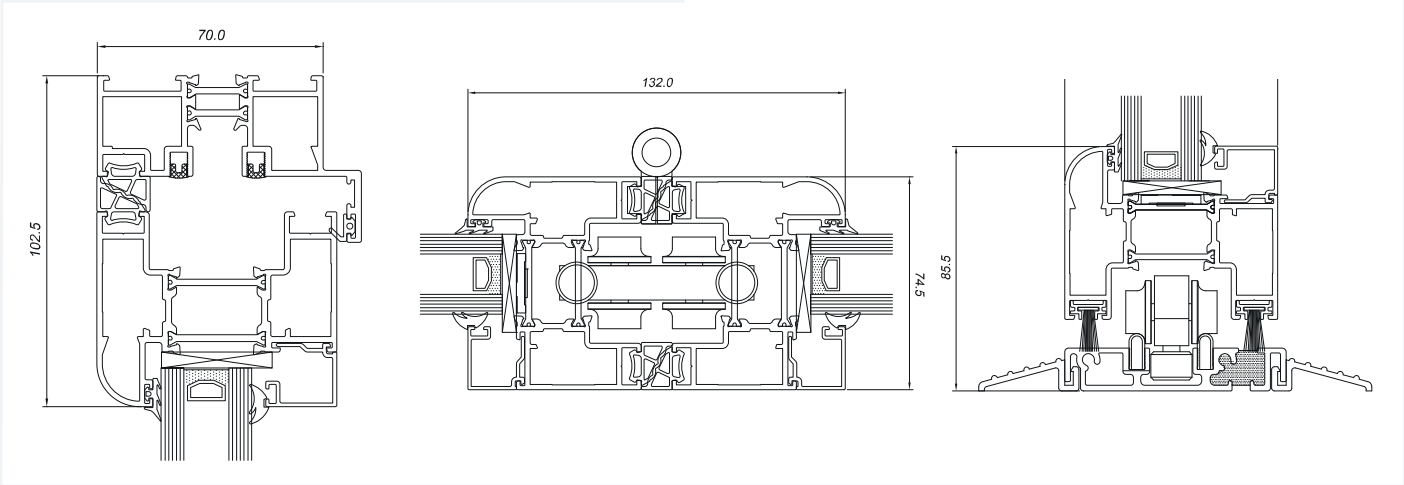
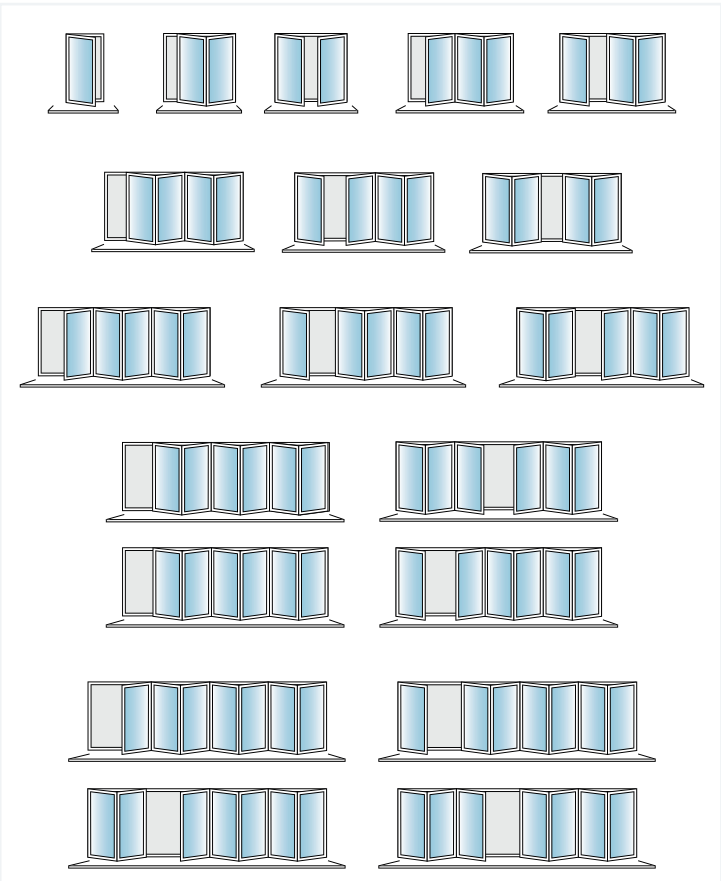
The Smart Bi-fold's flexibility makes it the ideal choice for projects where large, uninterrupted openings are required, providing maximum light and space to give unimpeded views. The highly-versatile, easy-to-operate system is the perfect option for even the largest project, capable of opening up an entire wall, yet presenting a contemporary, elegant glazed façade when closed.

Our profile features a thermal break to deliver enhanced thermal performance and energy efficiency and security is assured by multi-point lock mechanisms on the main opening sashes, and shoot-bolt locks on the 'floating' mullions.

The doors can have either a low threshold for unimpeded access, or a rebated threshold for improved weather resistance.

Our doors are available in a broad choice of colours including metallic, wood-structure, dual colour and Smart's unique Sensations range of textured finishes.

- Attractive slim-line profiles offers reduced sightlines
- Mitred corners
- Lift-up handles and one piece keep
- Broad range of single or dual colours.
- Marine quality polyester coated as standard
- U-Value 1.5 W/m²K with suitable glazing unit 1.0
- Air: Class 4, 600 Pa
- Water: Class E, 750 Pa
- Wind Class 4, 1800 Pa
- Document L compliant
- Enhanced security performance: PAS 24: 2016
- Frame width: 102.5mm
- Frame depth: 70mm
- Glass: Double or Triple glazed
- Max o/a height: 2500mm
- Max o/a width: 1200mm per sash
- Max sash weight: 100kg



Turkington's new Smart Aluminium Windows

This versatile range of profiles can provide many solutions for residential and light commercial applications. It can create traditional casement windows inspired by the elegance and styling of timber products, or contemporary style windows designed for modern homes.

The **Smart Aluminium Window** incorporates polyamide thermal break technology which creates a barrier between the cold air outside and the warm air inside. This technology significantly reduces thermal transmittance and enhances the overall U Value of a product and is designed to meet the exacting requirements of Document L 2010.

- Typical U Value 1.6 W/m²K (using 1.0 W/m²K centre pane)
- Air 600Pa
- Water 1200Pa
- Wind 2400Pa
- Side Hung Max Width 1000mm
- Side Hung Max Height 1400mm
- Top Hung Max Width 1400mm
- Top Hung Max Height 1500mm
- Designed to comply with the revisions to the Building Regulations Document L 2010
- British Standard Kitemark KM81580
- British Standard Kitemark KM81543
- PAS 24:2016
- BS 4873:2016
- BS 6375-1:2009
- BS 7950:1997
- Broad range of single or dual colours
- Marine quality polyester coated as standard
- Glazing: Double or Triple
- Frame depth 59mm or 70mm

